

# ACCELERATE YOUR DIGITAL TRANSFORMATION BY STREAMING TO HYBRID CLOUD

Bank of America's Opportunity to Drive Efficiency

## THE CHALLENGE

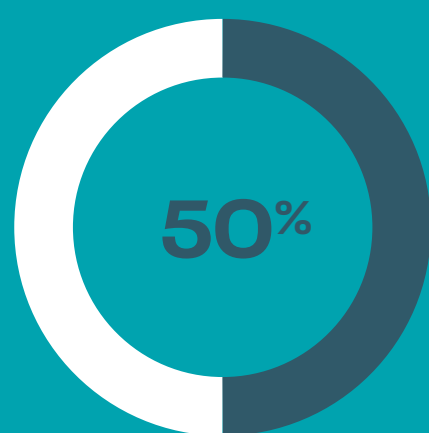
Bank of America is inundated with complex financial markets data streams that is difficult to capture, process, and harness in a timely manner

# 1.7 MB

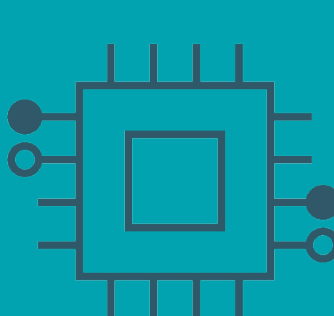
of data per person is created every second globally<sup>1</sup>

## THE SOLUTION

Cloudera's hybrid cloud platform improves efficiency, reduces costs, and accelerates time to market

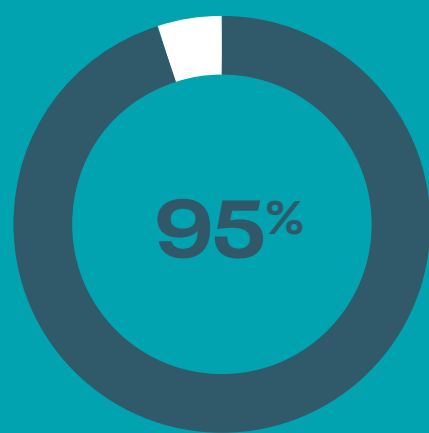


Cloudera's cloud environments can reduce data center costs up to 50%



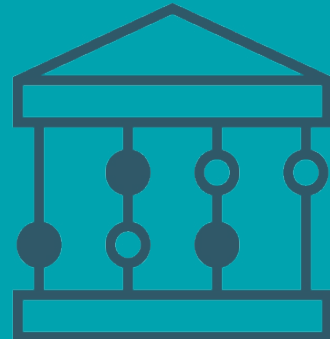
**20 PB**

NYSE gains real-time insights from more than 20 PB of Data—quotes, last sale, etc.



Using Cloudera, **Bombay Stock Exchange** reduced operational costs by 95%

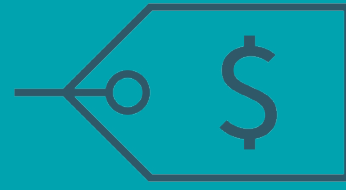
Cloudera has a proven history of data leadership in financial services. Its 520+ Financial Services clients include:



82 out of the 100 top global banks



80% of the largest stock exchanges



27 of 30 Global Systemically Important (G-SIB) banks

## CLUDERA DATAFLOW FOR DATA HUB

With Cloudera Data Flow for Data Hub, Bank of America can unlock the value of existing and new data sources.

Cloudera's next-gen hybrid cloud data management platform enables Bank of America to leverage real-time data and rapidly adjust to evolving market conditions.

## HOW CAN CLUDERA DATAFLOW FOR DATA HUB BENEFIT BANK OF AMERICA?



Deliver actionable insights that help financial services firms drive insights and action from data



Enable predictive analytics and ML against petabytes at a time



Prevent financial crime by identifying transaction anomalies



Ingest, analyze and process market data, FX rates, enterprise data sources, and more

**Cloudera helped our organization get to the next level by providing us with a streaming data platform, which provides us with real-time data.**

Martijn Groen,  
IT lead of the Data Lake, Rabobank

To learn more about Cloudera's hybrid cloud capabilities, contact Brian Ratte, [bratte@cloudera.com](mailto:bratte@cloudera.com).

Learn more about Cloudera DataFlow (CDF) from our [datasheet](#).

**CLUDERA**

<sup>1</sup> Digital Information World